



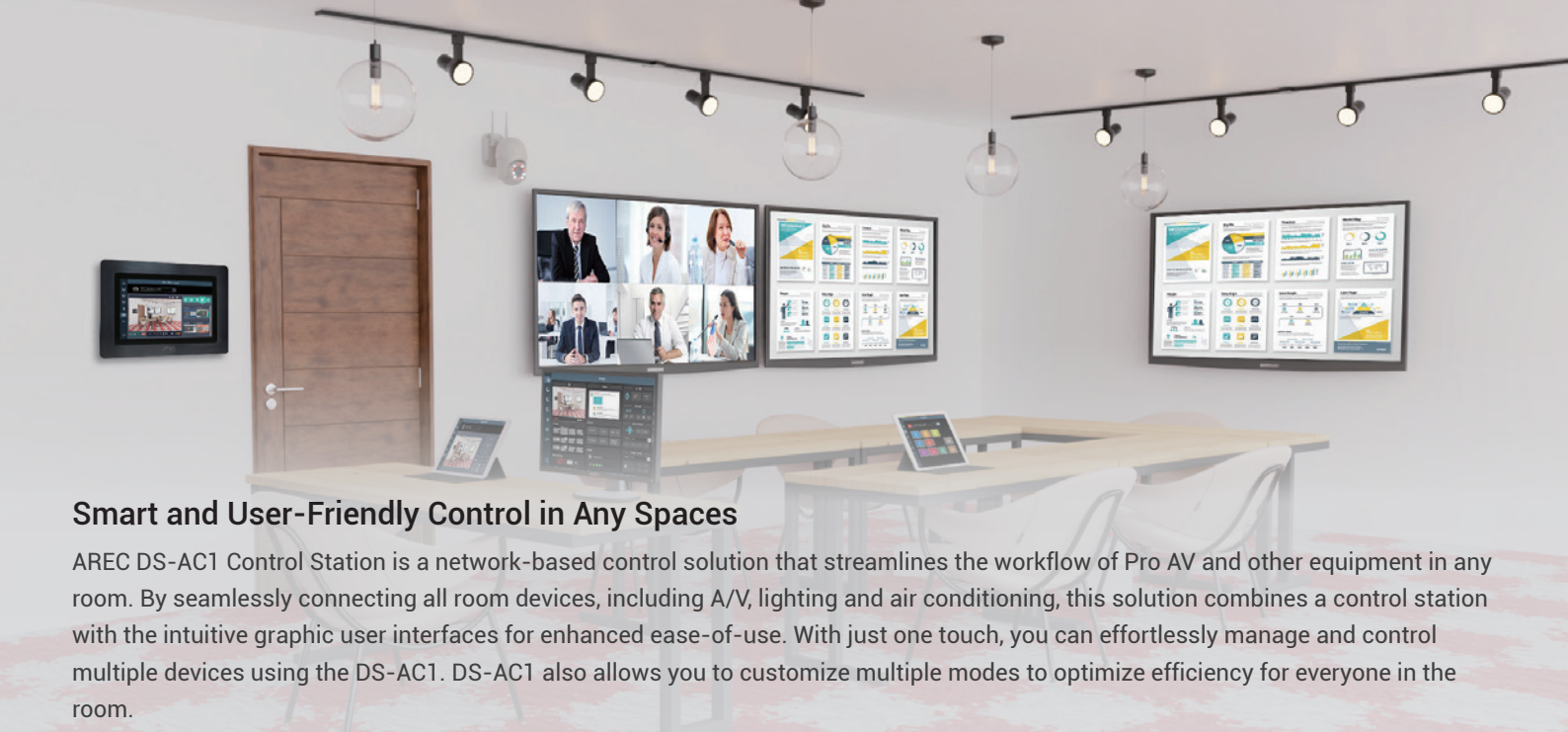
AREC DS-AC1 Control Station

Simplify Your Workflow

Make All Your AV Systems and Room Devices Work Together Seamlessly

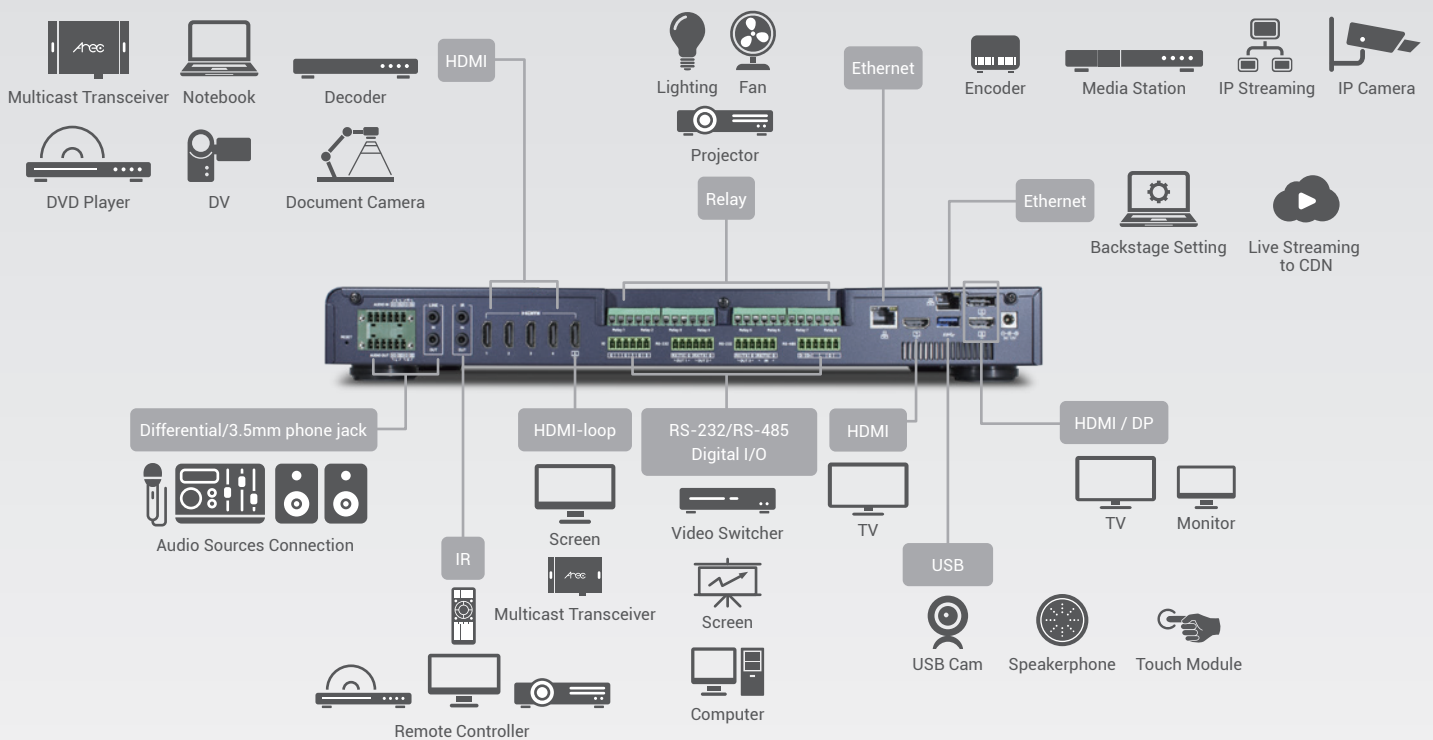


- One touch to turn the solution on or off. All on one intuitive interface.
- Supports control for over 20 devices, including AV equipment like PTZ cameras, microphone systems, lights, screens, shades, switches, projectors, and more.
- Enables direct control of devices in the room with onboard RS 232/485, IR learning & blaster, relay, digital I/O, differential audio, and USB HID ports.
- Seamlessly switch, play, and live-stream videos from HDMI, USB, and local/remote IP streams with ease.
- Web-based management and control via browsers on mobile devices, tablets, and laptops.
- Monitor power usage to get statistics on the power consumption of all devices.



Smart and User-Friendly Control in Any Spaces

AREC DS-AC1 Control Station is a network-based control solution that streamlines the workflow of Pro AV and other equipment in any room. By seamlessly connecting all room devices, including A/V, lighting and air conditioning, this solution combines a control station with the intuitive graphic user interfaces for enhanced ease-of-use. With just one touch, you can effortlessly manage and control multiple devices using the DS-AC1. DS-AC1 also allows you to customize multiple modes to optimize efficiency for everyone in the room.



Intuitive Graphic Control Interface

AREC DS-AC1 has web-based and device-direct-output graphic control interfaces that enable end-users to easily and quickly control room functions. The control interface of DS-AC1 supports multiple logins and diverse control options with devices, including Android TVs, touch panels, IFPD, mobile phones, and computers. In addition, through DS-AC1, users can also directly control AREC media stations and AREC PTZ cameras within the room.



Easy to Use Configuration Backstage

DS-AC1 provides a complete web-based configuration backstage, enabling you to configure settings and GUIs for controls effortlessly. The backstage makes it easy to set up and customize control patterns without any programming knowledge.



Free Management Cloud Service*

ARECloud is the free cloud service that can help administrators remotely monitor and manage all AREC Control Stations in real-time.

* Please contact your sales representative to confirm the schedule for the availability of ARECloud.



Power Consumption Statistics to Achieve Energy Savings

Designed with energy saving in mind, AREC DS-AC1 calculates the power consumption of hardware devices connected to the control station. It also supports scheduling for automatic power on/off. Power consumption statistics can be listed by device category and generated in both graphical and informative reports. Users can utilize the statistics to optimize the energy efficiency and achieve energy-saving goals.



Supports Customized GUI

AREC Control Station supports customized GUI design for room control through its APIs. The web browser of AREC DS-AC1 is compatible with ActionScript 3.0 that allows developers to use design-grade software like Adobe Animate to create fully-customized control interfaces for end-users.

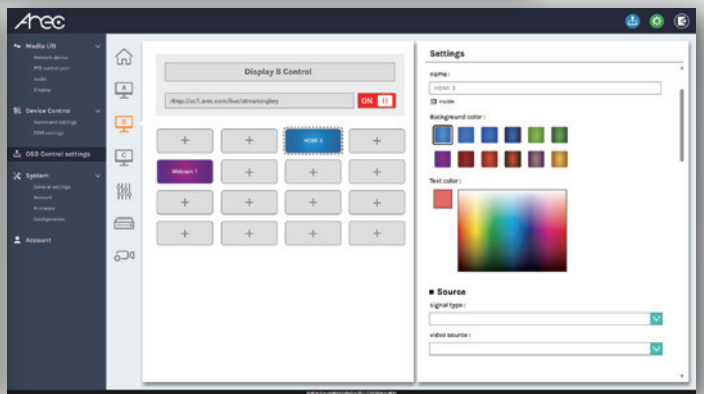
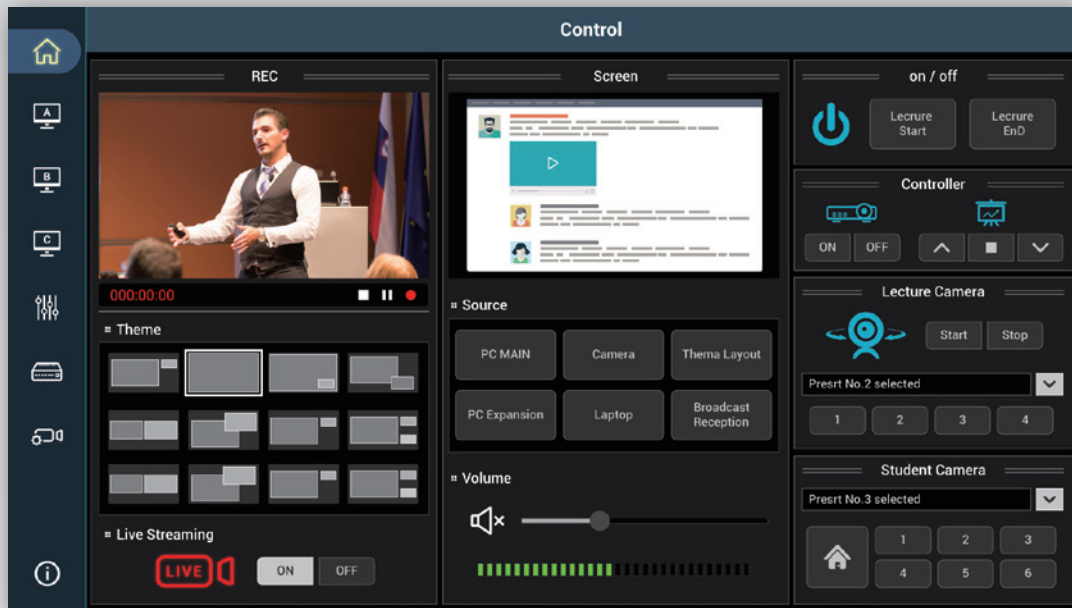


Embrace Flexibility with AREC's APIs

The AREC DS-AC1 control station offers APIs to seamlessly integrate with third-party systems. This offers a wider range of possibilities and improves efficiency for devices control, making it more user-friendly for all who enter the space. The solution is ideal for smart classrooms and multifunctional conference room.

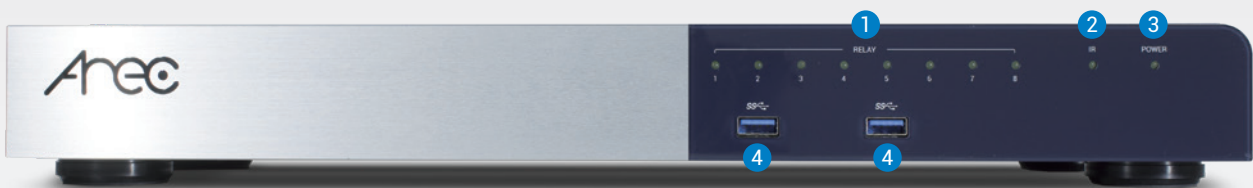


On-Screen Graphical User Interface & Configuration Backstage



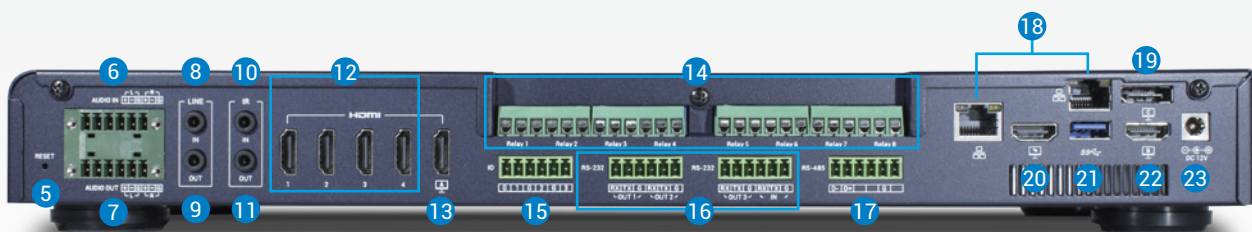
Product Interface

Front View



- 1 Relay Indicators
- 2 IR Indicator
- 3 Power Indicator
- 4 USB 3.0

Back View



- 5 Reset
- 6 Audio Differential-In
- 7 Audio Differential-Out
- 8 Audio Line-In
- 9 Audio Line-Out
- 10 IR Receiver
- 11 IR Blaster
- 12 HDMI-In
- 13 HDMI Loop
- 14 Relay
- 15 Digital I/O
- 16 RS-232
- 17 RS-485
- 18 Ethernet (WAN)
- 19 DisplayPort Out
- 20 HDMI 1 Out
- 21 USB 3.0
- 22 HDMI 2 Out
- 23 DC in 12V

Specifications

Model Name	AREC DS-AC1
Audio-Visual Input Connection	
Video Input Interface	<ul style="list-style-type: none"> • 4x HDMI (HDMI 2.0b; HDCP 2.2/1.4; HDR & HDR10) • 2x RJ-45¹ (Supports IP streaming & up to 4 sources) • 3x USB (Supports UVC source) Note 1: Supports network protocol: H.264 RTMP/RTMPS/RTP/RTSP/SRT and NDI HX. Supports network cameras, encoders, and other streaming sources.
Resolution Range	HDMI Max.: 1080p60 RTMP/RTMPS/RTP/RTSP Max.: 1080p30 USB(UVC) Max.: 1080p60
Audio-in Interfaces	<ul style="list-style-type: none"> • 1x 3.5mm Stereo • 1x Differential audio-in • 4x HDMI • 1x RJ-45: together with IP streaming & up to 4 sources • 1x USB: (Supports UAC source)
Video Processing	
Compression	H.264/ AVC
Frame Rate	Max. 30fps
Bit Rate	300Kbps~16Mbps
Resolution	Max. 1080p (640x360 ~ 1920x1080)
Audio Processing	
Compression	AAC-LC
Bit Rate	80Kbps~320Kbps
Audio Mixing	Mix all the audio input sources into 1 for output
Video / Audio Outputs	
Video Outputs	<ul style="list-style-type: none"> • 1x HDMI for loop out (internal switch from adjacent 4 HDMI inputs) • 1x HDMI for preview (PGM with on-screen GUI) • 1x HDMI for source view (inputs display or multi-source monitoring) • 1x DisplayPort for source view (inputs display or multi-source monitoring) • 1x RJ-45 (1 streams: H.264/AVC digital video over Ethernet via protocols of RTMP/ RTMPS/ RTP/ SRT and NDI HX)
Output Resolution	Up to 1080p60
Audio Outputs	<ul style="list-style-type: none"> • 1x 3.5mm Stereo Line out • 1x Balanced audio-out with a 6-pin Phoenix connector • 2x HDMI • 1x DisplayPort • 1x USB (UAC) • 1x RJ-45 (1 streams: H.264/AVC digital video over Ethernet via protocols of RTMP/ RTMPS/ RTP/ SRT and NDI HX)
Streaming	
Streaming Delay	1 sec.
Compatible Streaming Input Protocols	RTP, RTMP (RTMPS), SRT, NDI HX
Streaming Output Protocols	RTP, RTMP (RTMPS), SRT, NDI HX Note: 1. users can choose output options from RTP or RTMP(RTMPS) 2. RTP: MPEG2-TS over RTP unicast; MPEG2-TS over RTP multicast
Scheduling	Yes, supports iCalendar format (.ics file), such as Google Calendar
Live Broadcast to CDN or Stream Server	Stream up to 1 platforms simultaneously

Control Interface	
Touch Interface	Through touch screen and interactive projector
Mouse Device and Numeric Keypad	Through USB interface connection
Web Control Interface	Manual control via webpage from a computer, tablet, or mobile phone (for tablet or mobile phone, please use a wireless connection)
Video Switcher	Yes, through web-based interface or on-screen GUI for manual controls
IR signal	<ul style="list-style-type: none"> • 3.5mm female connectors • 1x In, 1x Out • TTL level (0 to 5 V) infrared (carrier and non-carrier) up to 300 kHz? • IR output carrier frequency: 38 kHz • IR learning carrier frequency: 38 kHz • IR learning capture distance: 2" (5.1 cm) to 12" (30.5 cm) from the front panel
Relay ports	<ul style="list-style-type: none"> • 8 x 3.5 mm captive screw connector, 3-pole • Relay control contact rating: 10A/250VAC, 10A/30VDC
Digital I/O ports	<ul style="list-style-type: none"> • 3 x output, 2-pole • Digital outputs: 250 mA sink from 5 VDC max. • Pin configurations: 1, 2, 3 = digital I/Os 1, 2, 3; G = Gnd
RS-232 ports	<ul style="list-style-type: none"> • 4 x 3.5 mm captive screw connectors, 3-pole • 1x In, 3x Out • Signal: RX, TX, GND
RS-485 ports	1 x 3.5 mm captive screw connectors, 6-pole Signal: DATA-, DATA+, GND
Network ports	<ul style="list-style-type: none"> • 2 x female RJ-45 connector • 10/100/1000Base-T, half/full duplex with auto-detection
Indicators	<ul style="list-style-type: none"> • 1x Power: Green/Red light to show device status • 1x IR: Green light to show IR status • 8x Relay: Green light to show Relay status
Group Management*	Yes, through ARECloud or advanced software services
Camera Control	VISCA / PELCO-D / PELCO-P / VISCA over IP/ ONVIF profile S/NDI
Reset	Long press the hidden button to reset
General Information	
Operation System	Embedded Linux system
Power Supply	12V/ 3.34A/ 40W
Power Consumption	40W (max)
Temperature / Humidity	0~40°C/ 90%
Dimension	406.4mm(L) x 183.4mm(W) x 54mm(H)
Weight	2.46kg (5.4lbs)
Language	SC/ TC/ English/ Russian/ Spanish/ Czech/ Korean/ Latvian/ German/ Estonian
Accessories	Power adapter/ quick guide/ Ear Mounts

* Please contact your sales representative to confirm the schedule for the availability of ARECloud.



AREC Inc. | www.arec.com | sales@arec.com

Address: 3F, No. 367, Sec.2, Wenhua RD., Banqiao Dist., New Taipei City 220, Taiwan (R.O.C) TEL: +886-2-8259-5060

Preliminary version, AREC reserves the right to modify product specification without prior notice.

Please contact your sales representative for further confirmation.